

How to Build Your First Cosmic Frog Model in 4 Simple Steps

Ready to build your first Cosmic Frog model?

We've got your back. We'll guide you through four simple steps and you'll be on your way to answering your toughest supply chain what-if questions.

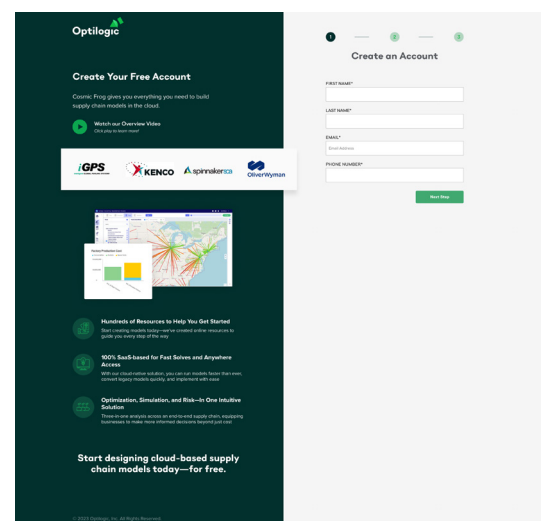
- 1 Create a New Model or Select a Template
- 2 Upload Your Data (or Use Our Test Data!)
- 3 Build and Run Scenarios
- 4 Analyze and Share Scenarios with Vivid Maps and Analytics

Before You Jump in, Create Your Free Account

Supply Chain Network Design that Balances Cost, Service, and Risk

Create your free Cosmic Frog account so you can follow along. Just enter your contact information and create a username and password. No credit card or data upload required!

Create Your Free Account

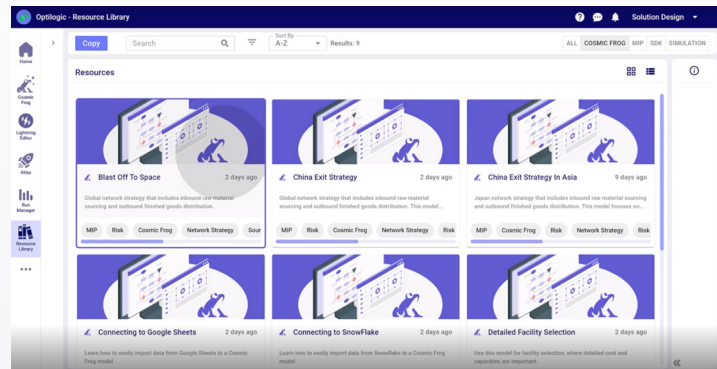


1 Create a New Model or Select a Template

Everything in these four steps is accessible with your free Cosmic Frog account. Once you log into your account, start at the home page.

We recommend you begin by watching a [tutorial video](#), reading the [documentation guide](#), or [email our friendly support team](#).

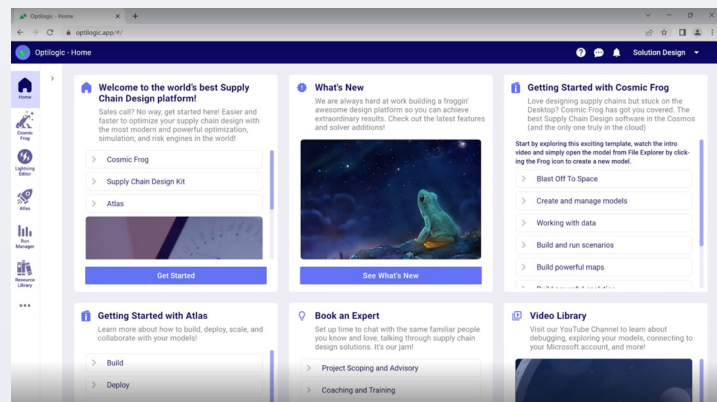
You can build a new model from scratch or choose a template. Our pre-built template model, [Blast Off to Space](#), is a great place to begin.



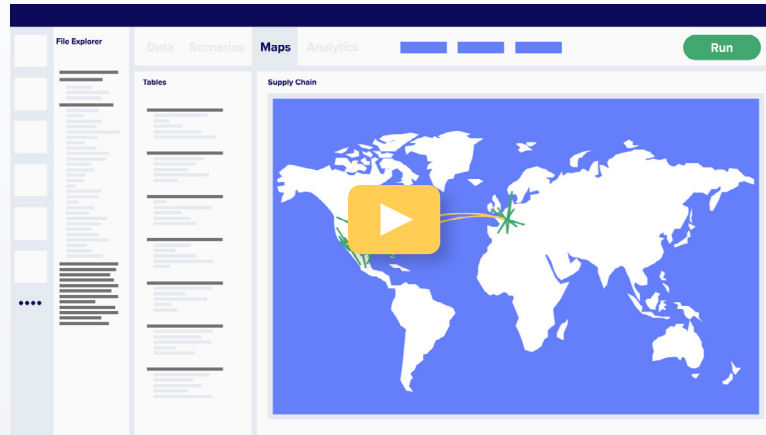
2 Upload Your Data (or Use Our Test Data!)

Don't want to use your own data? No problem. Use our pre-built template model, Blast Off to Space, which includes test data.

Ready to use your own data? There are plenty of fast and easy options for upload, including an [automated converter for legacy models](#), and a Resource Library filled with template models.

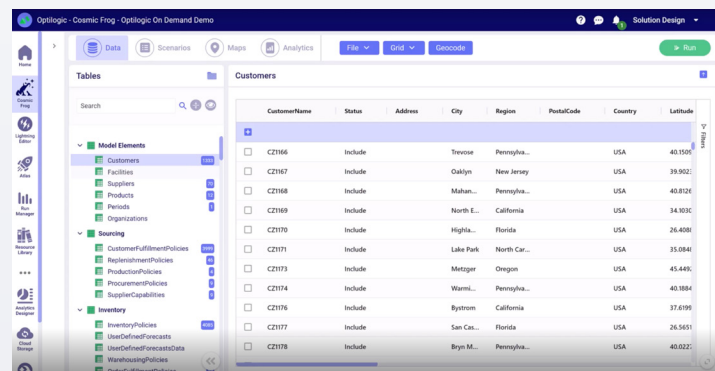


Here's How Our Automated Legacy Model Converter Works:

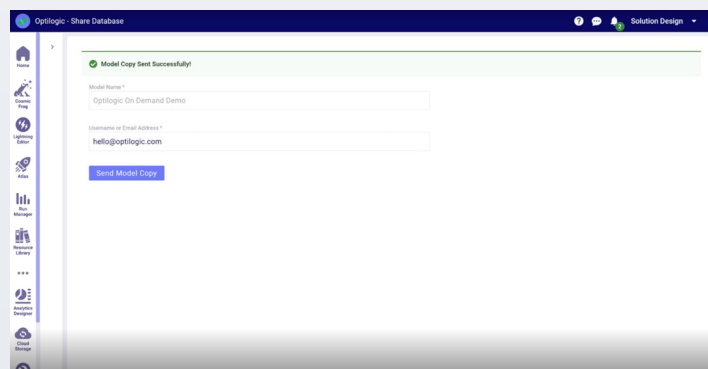


Other Simple Ways to Upload Your Data:

- Import and export Excel and CSV files
- Use SQL Editor, Python scripts, or OneDrive connection
- Connect your ETL of choice, such as Alteryx



| CustomerName | Status | Address | City | Region | PostalCode | Country | Latitude |
|--------------|---------|------------|--------------|--------|------------|---------|----------|
| CZ1166 | Include | Tennoe | Pennsylva... | USA | 40.1500 | | |
| CZ1167 | Include | Oaklyn | New Jersey | USA | 39.9020 | | |
| CZ1168 | Include | Mahan... | Pennsylva... | USA | 40.8120 | | |
| CZ1169 | Include | North E... | California | USA | 34.1030 | | |
| CZ1170 | Include | Highla... | Florida | USA | 26.4080 | | |
| CZ1171 | Include | Lake Park | North Car... | USA | 35.0840 | | |
| CZ1173 | Include | Metzger | Oregon | USA | 45.4490 | | |
| CZ1174 | Include | Warm... | Pennsylva... | USA | 40.1884 | | |
| CZ1176 | Include | Bystrom | California | USA | 37.6199 | | |
| CZ1177 | Include | San Cas... | Florida | USA | 26.5651 | | |
| CZ1178 | Include | Bryn M... | Pennsylva... | USA | 40.0220 | | |



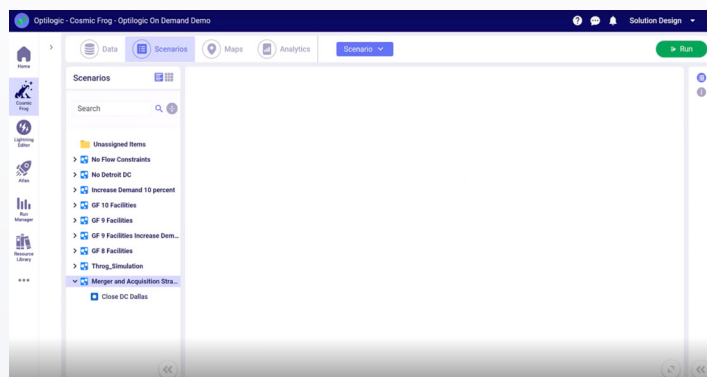
Want to Collaborate with Your Team?

Our cloud-native solution makes it easier than ever to share models across teams and time zones. Share a copy of your model with one click.

3 Build and Run Scenarios

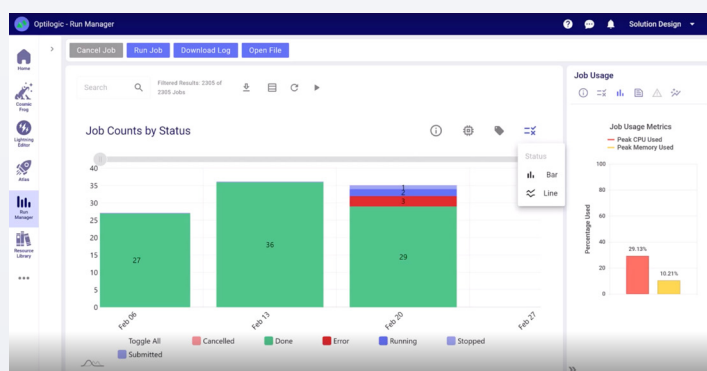
With scenarios, you have an unlimited ability to ask Cosmic Frog questions about potential changes to supply chain policies. Cosmic Frog combines three engines in a single platform:

- Network Optimization and Intelligent Greenfield
- Simulation
- Risk



Go to “Scenarios” to build and run what-if scenarios.

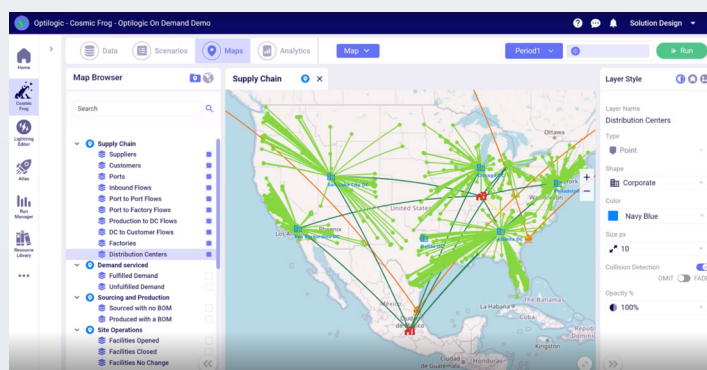
Once you’ve built your scenarios, run as many scenarios as you like in parallel with hyperscale technology. No need to ask IT for a new laptop or worry about tying up your local machine—everything is solved completely in the cloud.



4 Analyze and Share Scenarios with Vivid Maps and Analytics

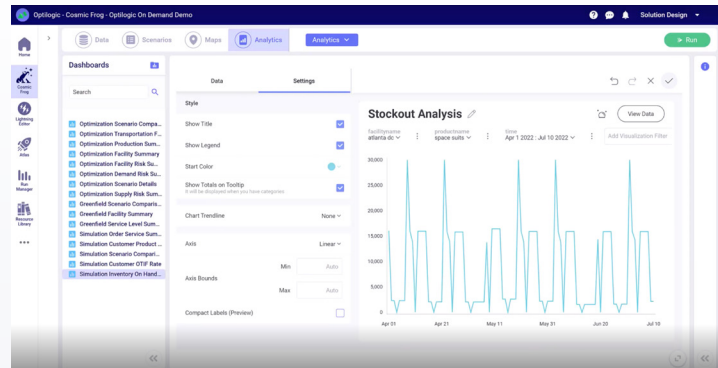
Use analytics to review your results and share with stakeholders. Use our pre-built template dashboards or easily build your own. Maps help you visualize the structure and flow of your network design.

Ready to share with your team? Export your dashboards to a PDF, PowerPoint, or image and include them in your e-mails and presentations.



Incorporate Simulation to Test the Viability of your Supply Chain Design

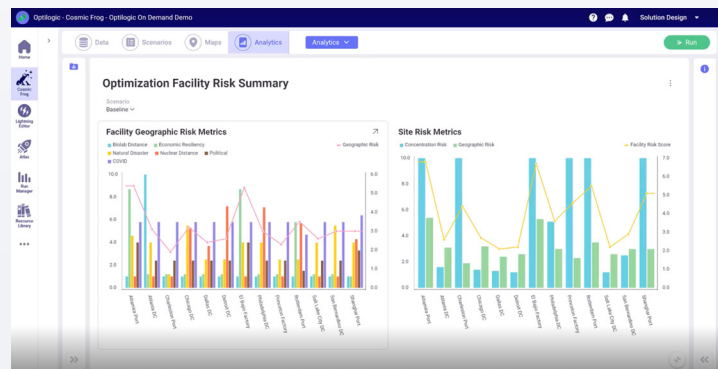
Use [simulation](#) to stress-test your system, refine strategies and policies, and test the feasibility of a design and the true impact of proposed changes.



Quantify Risk with Cosmic Frog's Opti-Risk Score

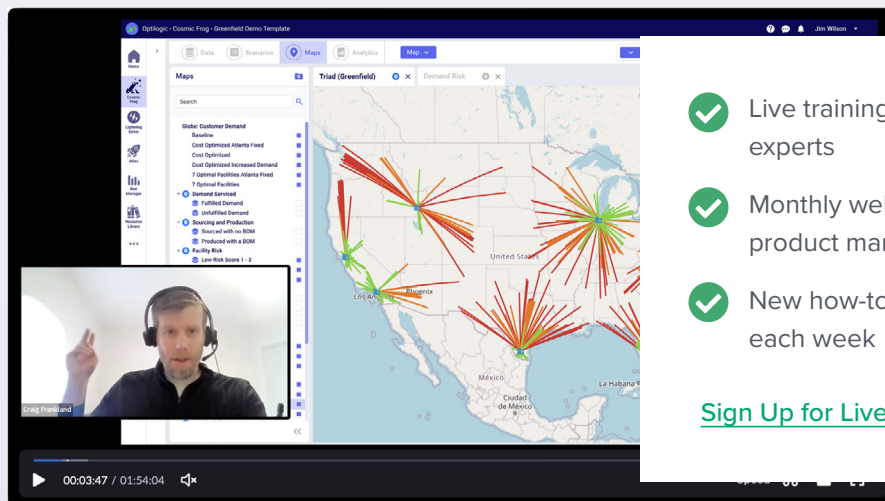
Use Cosmic Frog's [risk engine](#) to identify and quantify risks at the Supplier, Facility, Customer, and Network level. These include external risks like proximity to a nuclear power plant and operational risks like percentage of volume that is single sourced.

Every scenario run in Cosmic Frog automatically includes a risk rating.



Need Help Getting Started?

Become a design expert with hundreds of helpful training resources. Check out our [documentation site](#) for how-to articles and videos or register for our [monthly live webinars](#).



- ✓ Live training sessions with design experts
- ✓ Monthly webinars with Cosmic Frog product management team
- ✓ New how-to articles and videos added each week

[Sign Up for Live Cosmic Frog Training](#) ➔

Join the New Era of Supply Chain Design

Cosmic Frog is the only supply chain network design platform that balances financials, service, and risk—in a 100% SaaS-based environment.



3-in-1 Design Platform

Optimization, simulation, and risk analysis across an end-to-end supply chain in a single platform, equipping businesses to make more informed decisions beyond just cost.



Get Up and Running in Minutes

3, 2, 1, blast off! We offer professional grade-solving technology for optimization, simulation, risk, and advanced analytics – with ZERO installation or lengthy configuration.



Risk Rating for Every Scenario

Cosmic Frog provides a risk rating on every scenario run to help companies proactively minimize risk and volatility.



Access from Anywhere and Collaborate with Ease

Whether you need a fresh set of eyes to review your models or you're ready to lead your next stakeholders meeting with confidence, our platform allows you to easily work together on projects and share models enterprise-wide.

[Sign Up for Free](#)